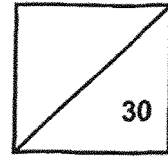


Red Swastika School
Primary 4 Science 2025
Class Test 1



Name: _____ () Parent's Signature: _____

Class: Pr. 4 _____ Date: _____

Total time for Section A and B: 40 minutes

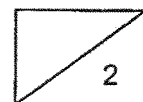
Section A: Multiple-Choice Questions (9 x 2 = 18 marks)

For Questions 1 to 9, choose the most suitable answer and shade its number in the OAS provided

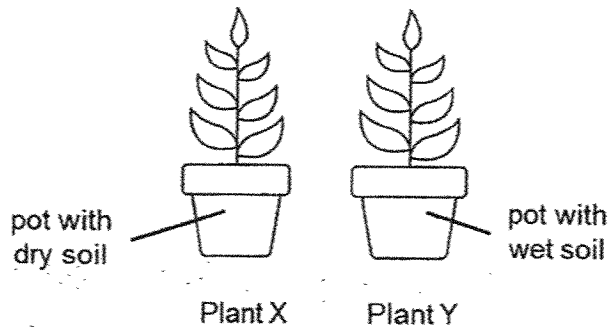
1. Statements A, B, C and D below describe the characteristics of bacteria and fungi.
- A They cannot reproduce.
 - B They can make their own food.
 - C They can cause diseases in other organisms.
 - D They can break down dead organisms into simpler substances.

Which of the above statements are **not** correct?

- (1) A and B only
 - (2) A and D only
 - (3) B and C only
 - (4) C and D only
- ()



2. Mary placed two similar pots of plants, X and Y, in a school garden for a few days. She watered Plant Y daily but not Plant X.



After some time, she observed that Plant X died but Plant Y grew well and taller. She concluded that plants need water to live.

What is the aim of her experiment?

To find out if _____.

- (1) sunlight is needed for plants to reproduce.
- (2) water is needed for plants to grow.
- (3) oxygen is needed for germination.
- (4) soil is needed to survive.

()

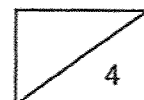
3. Ahmad recorded his observations on the development of plant X.

| Day | Development |
|-----|----------------|
| 1 | seed planted |
| 3 | root appeared |
| 7 | shoot appeared |
| 10 | leaf appeared |

When would plant X need light to make food?

- (1) Day 1
- (2) Day 3
- (3) Day 7
- (4) Day 10

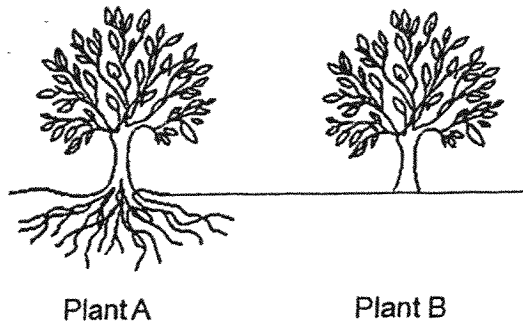
()



4. In which part of the digestive system is food first broken down into smaller pieces?

- (1) Mouth
- (2) Gullet
- (3) Stomach
- (4) Small intestine ()

5. Lisa has two similar plants. She removed all the roots from plant B and placed it back into the soil:



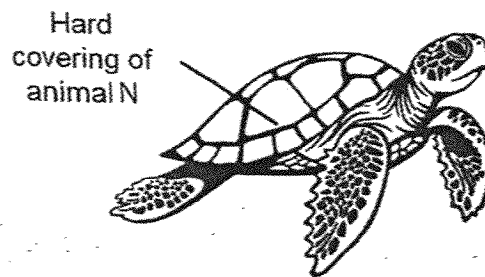
When the plants were blown by a strong gust of wind, she noticed that plant B fell but plant A did not.

Based on her observation, what can she conclude about the function of roots?

- (1) The roots store food.
- (2) The roots anchor the plant firmly to the ground.
- (3) The roots absorb water and mineral salts from the soil.
- (4) The roots transport food and water to other parts of the plant. ()



6. The picture below shows animal N.

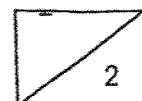


The hard covering of animal N prevents it from being harmed by other organisms. It does not break easily.

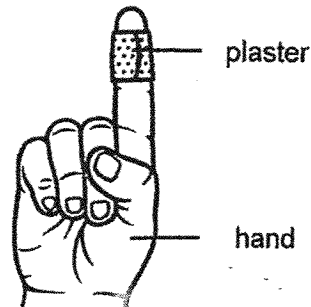
Which of the following property describes the body covering of animal N?

- (1) Strong
- (2) Flexible
- (3) Waterproof
- (4) Floats in water

()



7. The diagram shows a plaster on a finger. The plaster is used to keep an injury clean and prevent water from reaching the injury.



The table below shows the properties of four materials, W, X, Y and Z. A tick (✓) indicates that the material has the property and a cross (×) indicates that the material does not have that property.

| Material | Waterproof | Flexible |
|----------|------------|----------|
| W | × | × |
| X | × | |
| Y | | |
| Z | | × |

Based on the properties shown above, which material is most suitable to make the plaster?

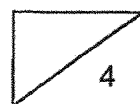
- (1) W
- (2) X
- (3) Y
- (4) Z

()

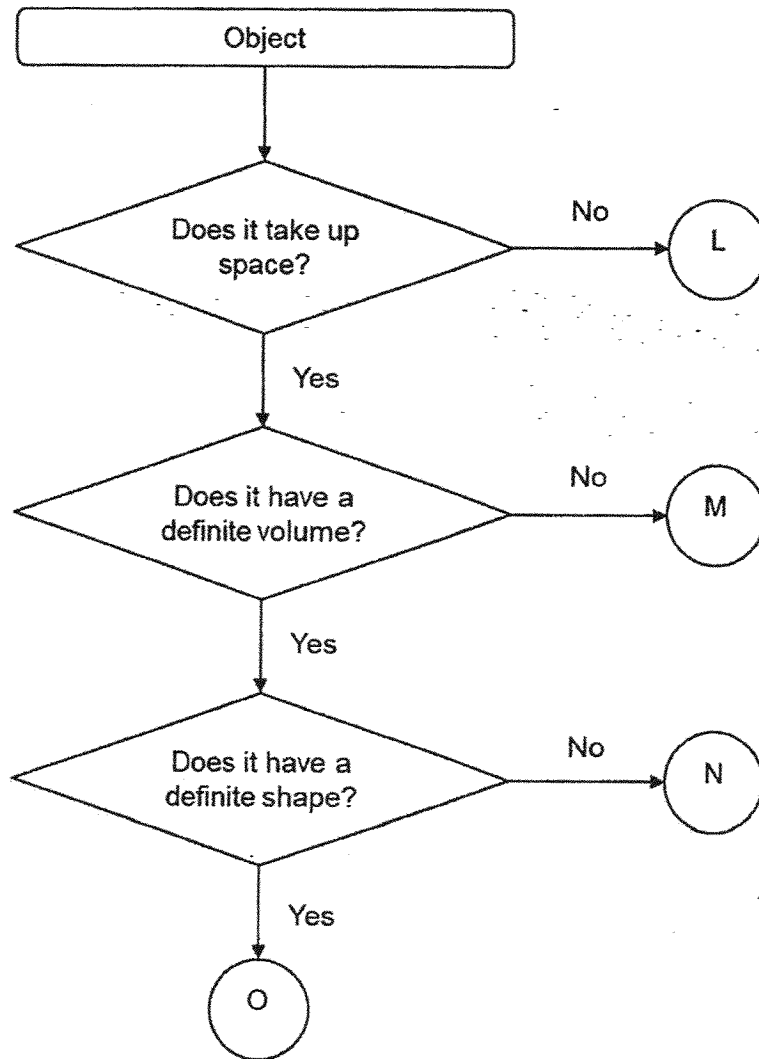
8. Which of the following property is true for both air and a pencil?

- (1) They can be seen.
- (2) They take up space.
- (3) They have a definite shape.
- (4) They have a definite volume.

()



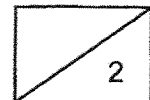
9. Study the flow chart below.



Which of the following correctly represents a chair?

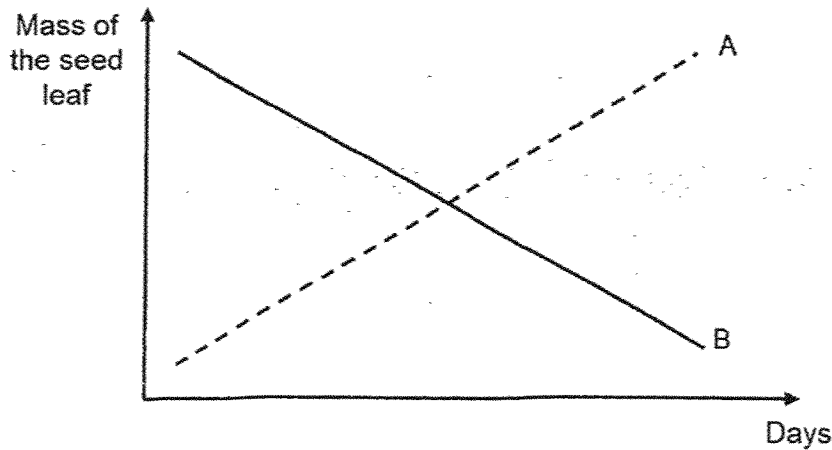
- (1) L
- (2) M
- (3) N
- (4) O

()

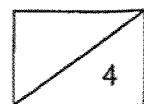


Section B: Open-ended Questions (3 x 4 = 12 marks)

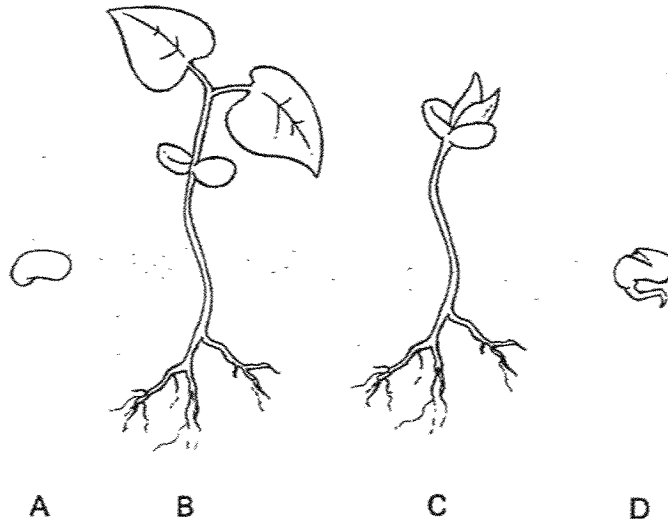
10. Amy conducted an experiment to find out how the mass of the seed leaf changes as the seed germinates into a seedling. She plotted the graph as shown below.



- (a) During germination, which part of the seedling will grow out of the seed first? (1m)
-
- (b) Which line, A or B, correctly shows the mass of the seed leaf as the seed germinates into a seedling? (1m)
-
- (c) Explain your answer in part (b). (2m)
-
-

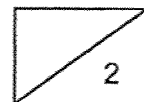
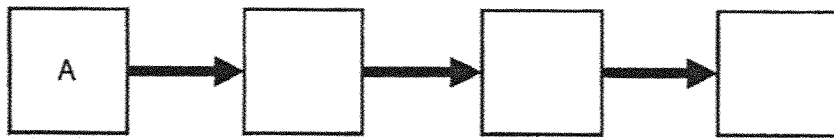


11. The diagram below shows the stages of a life cycle of a plant.

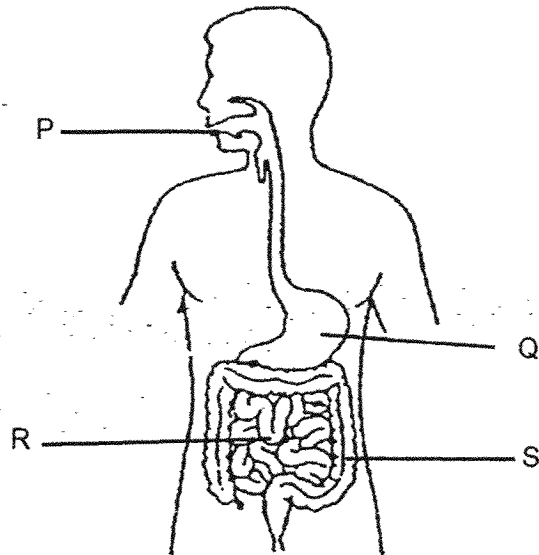


(ai) Name stage A of the life cycle of the plant. (1m)

(aii) Fill in the boxes below, using A, B, C and D, in the correct sequence to show how plants grow. The first letter has been filled in. (1m)

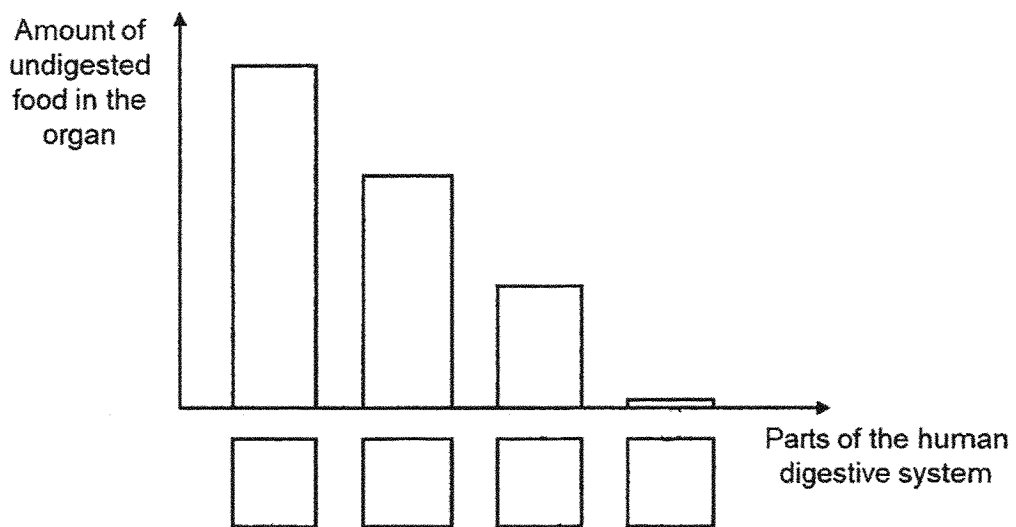


(b) The diagram below shows the human digestive system.

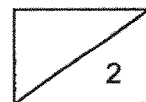


(i) State the function of part S. (1m)

The graph below shows the amount of undigested food in 4 parts of the digestive system.



(ii) Fill in the boxes above using P, Q, R and S for the parts of the digestive system. (1m)

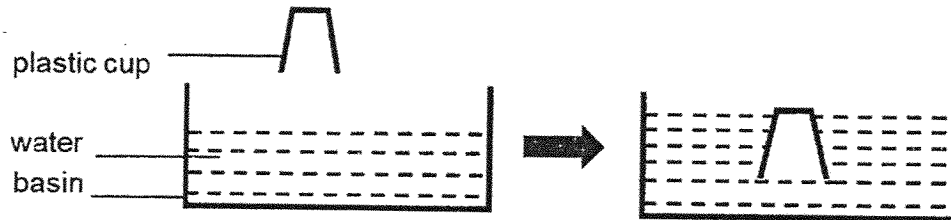


12. The following statements are on matter. Tick (✓) the correct statements below. (2m)

(a)

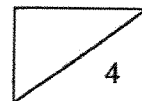
| Statements | Tick |
|-------------------------------|------|
| Air has mass. | |
| Water occupies space. | |
| Air has a definite shape. | |
| Water has no definite volume. | |

(b) Jayden pushed an empty cup into a basin of water as shown below.



(i) Did the volume of water in the basin decrease, increase or remain the same after the plastic cup was pushed into the basin? (1m)

(ii) Explain your answer in (i). (1m)



SCHOOL : RED SWASTIKA PRIMARY SCHOOL
LEVEL : PRIMARY 4
SUBJECT : SCIENCE
TERM : 2025 WEIGHTED ASSESSMENT 1

| | |
|-----|--|
| 1 | 1 |
| 2 | 2 |
| 3 | 4 |
| 4 | 1 |
| 5 | 2 |
| 6 | 1 |
| 7 | 3 |
| 8 | 2 |
| 9 | 4 |
| Q10 | <p>a) The roots.</p> <p>b) B</p> <p>c) As the seedling grow, the mass of the seed leaf decreases because the seedling absorbs food from the seed leaf.</p> |
| Q11 | <p>ai) The seed.</p> <p>aii) $A \rightarrow D \rightarrow C \rightarrow B$</p> <p>b) To absorb water from the undigested food.</p> <p>bii) P, Q, R, S</p> |
| Q12 | <p>a) Air has mass. Water occupies space.</p> <p>b)</p> <p>i) Remains the same.</p> <p>ii) Water has a definite volume.</p> |
| Q12 | <p>a) Air has mass. Water occupies space.</p> <p>b) i) Remains the same.</p> |

